



ACTIVITY

LET'S MAKE AN EDIBLE GARDEN AT HOME!

With your creativity, any place can be turned into a garden.



WHAT YOU'LL NEED

materials that can be used for plant pots



box cutter



soil



your hands
(or a trowel)



seeds and
seedlings

- 1 Design your garden:** Draw a map of the garden you want. What do you want to plant? Where do you plant them?
- 2 Make plant pots:** Make original pots with materials you can find.
- 3 Start planting:** Plants have seasons they like and don't like. When you plant them together, they may become friends with their neighbors, or they may start to fight. When is a good time to plant? What can you plant together?
- 4 Make observations:** How much did a plant grow in a week? What's the shape of its leaf? What happens when you don't water it?
- 5 Make your own fertilizer:** Food scraps can become good materials for healthy soil.
- 6 Harvest your garden:** Eat your fresh picks! Why do things you grow taste so good?

EDIBLE GARDEN ON A BALCONY

VERTICAL GARDENING

Make plastic bottles and milk cartons into waterproof plant pots!

GREEN CURTAIN

It cools the room by blocking out sunlight. It's a great way to beat the summer heat!

RAILING PLANTERS

Plants get to bathe in the sun if you grow them in planters on the balcony rail.

DRIED VEGETABLES AND FRUITS

Make vegetable chips and dried fruits by sun-drying vegetables and fruits. They are sweet and packed with nutrients.



Wow—did you know tomatoes can grow out of pots hanging in the air?



GROW MUSHROOMS

Place a log inoculated with mushroom spores, or make a mushroom bed in a shady and cool place to grow mushrooms.

EARTHWORM COMPOST

Earthworms eat food and paper scraps, and turn them into fertilizer for your garden. You can make a compost simply by reusing a plastic container.

GROWING UPSIDE-DOWN TOMATOES

Bugs are less likely to come, and it doesn't need much space. You can turn plastic bottles into tomato pots by cutting off the bottom.

THINGS TO TURN INTO PLANT POTS AROUND YOU



EGG SHELLS



OLD SNEAKERS



DAD'S TREASURED GUITAR!

Imagine having edible gardens on the streets you walk on. Let's see if you can spot a place to make a garden!





ACTIVITY

MAKE A HABITAT MAP

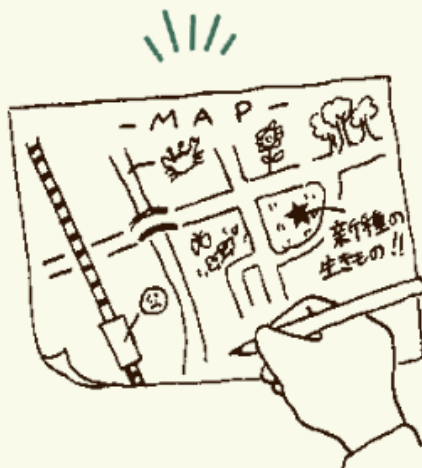
A Treasure Map of Life

Why does life exist there? What are the characteristics of that place? There must be a reason for life to gather around there. By learning about the characteristics and different species living in your community, you'll find many clues on how to live with biodiversity.

LET'S GIVE IT A GO!

- 1 Draw a map of your neighborhood.
- 2 Fill the map with your discoveries as you walk around the neighborhood.
- 3 Think and come up with answers on why life exists in certain places.

Exchange your map with a few friends. Are there differences in each other's discoveries?



It's just like a treasure hunt!



EARTH IS OUR HOME

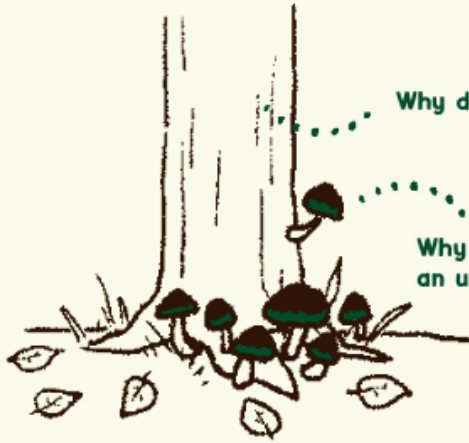
The Earth is one big home. She houses the elephants and killifish, the sunflowers and tomatoes, and the tiny invisible microorganisms too. We are all housemates living together on Earth. It is said that there are over 100 trillion bacteria living in our human bodies. We live by coexisting with each other in different ways.



WHERE ARE THESE PLACES?

1. Where Mushrooms Grow

Mushrooms are technically not plants but fungi. The umbrella-shaped cap is the visible portion of a mushroom body. The underground portion is the mycelium, which is a mass of interwoven rootlike filaments that spread all around the soil. The mushroom is in fact a large living organism.



Why do mushrooms grow here?

Why do mushrooms have an umbrella-shaped cap?

2. Where Butterflies Fly

It's said that butterflies have a regular flight path they use to fly. The paths, determined by the amount of light, temperature, time of day, and location of their favorite plants, vary with different butterflies. Maybe you'll find the flight path of a butterfly to spy on?



What flowers do they like?

How do they differentiate the flowers?

3. Where People Feel Happy or Depressed



What draws people to come here?